



AL FATEH
industrial suppliers

الفاتح
لتجهيزات المصانع

Specializing in Valves, Flanges and Fittings



About us

Established in 1998, **AL FATEH INDUSTRIAL SUPPLIERS W.L.L** is the leading importer and distributor of a full range of flow control systems and piping accessories for Industrial, Petrochemical, Chemical, Sanitary and Building sector, Water and Sewerage, Marine and Oil & Gas sectors.

For any industrial project expansion or re-engineering, shutdown requirement or new projects we have the right products available.

The product mix includes all types of **Valves • Pipes • Fittings • Flanges • Gaskets • Expansion Joints • Flexible hoses • Piping spools • Air filter regulator • Pressure gauge • Flow meters • Universal coupling • Flange adaptors** and many other related components available from our ready stock.



GATE VALVES & ACCESSORIES

Ductile Iron / Cast Iron Resilient seated up to DN 600, metal seated up to DN 1500 for pressures up to PN25 flanged, spigot ends, socketed for Steel, PVC, DI pipes as per EN, BS, DIN, ANSI standards with operation hand wheel, actuators, extension spindles.

Application: Petrochemical, Food, Pulp & Pharmaceutical-processing plants through out the world. Design to conform to ASTM,ANSI,API,BS and other internationally recognized standards with the qualities to meet their stringent quality requirement conditioned for such industrial application. All sizes & various brands also available.



GLOBE VALVES



Ductile Iron / Cast Iron Resilient seated up to DN 600, metal seated up to DN 1500 for pressures up to PN25 flanged, spigot ends, socketed for Steel, PVC, DI pipes as per EN, BS, DIN, ANSI standards with operation hand wheel, actuators, extension spindles.

CAST STEEL VALVES

As per API 600, API 6D, BS: 1873, BS: 1868 and ASME B16.34

Sizes: DN 15 to DN 1200

Type: Gate, Globe, Check

Materials: WCB, LCB, CF8, CF8M, CF3, CF3M, WC6, LCB, CD4MCu

Rating: Class 150 to 2500

Ends: Flanged/Weld

Specials: Extended bonnet, Motor operated.

Application: Petrochemical, Petroleum refinery, Electric power, Thermo electrical power, Gas, Food, Synthetic fiber, Chemical fertilizer, drugs & chemical, Glass manufacturing, Paper manufacturing & other industries. All sizes & various brands also available.



FORGED STEEL VALVES



As per BS 5352 & API 602

Sizes: DN 15 to DN 50

Type: Gate, Globe, Lift check

Materials: A105, F5, F11, F22, LF2, F304, F316, F304L, F316L

Ratings: Class 800# to 2500#

Ends: Screwed, SW, BW

MARINE VALVES



A range of Marine valves are available in JIS 5K/ 10K/ 16K Flanged or threaded ends in Cast Iron, Bronze, Brass, Cast Steel Body serving the marine industry.

Some of the Valves include Bronze Deck Hose Valve, Marine Gate Valve, Marine Globe Valve, Storm Valve, Air vent Heads, Angle Valves (SDNR also available)

BALL VALVES

As per BS 5351

Sizes: DN 6 to DN 700

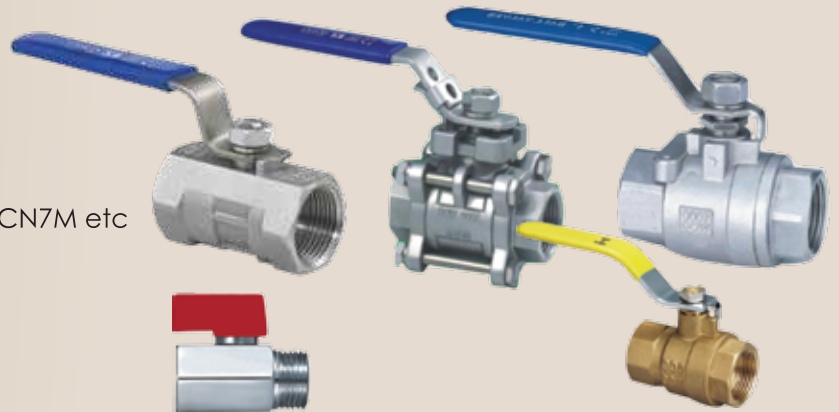
Types: Regular port, full bore

Material: A216, F304, F316, CF8, CF8M, CF3M, CN7M etc

Rating: Class 150, 300, Flanged

Class 600, 800, 1500, 2500 SCRD, BW

Ends: Flanged, Scr'd, Weld



BALL VALVES - FLOATING & TRUNNION



Application: Petrochemical, Food, Pulp & Pharmaceutical processing plants through out the world. Design to conform to ASTM, ANSI, API, BS and other internationally recognized standards with the qualities to meet their stringent quality requirement conditioned for such industrial application. All sizes & various brands also available.

As per BS 5351/API 609

Sizes: DN 15 to DN 600

Types: Reduced and full port

Material: A216, F304, F316, CF8, CF8M, WCB

Rating: Class 150, Class 300 PN 16, PN 40

Ends: Flanged

BUTTERFLY VALVES - WAFER

As per BS, ISO, JIS, DIN, Universally Flanged

Sizes: DN 40 to DN 1600

Material: DI, CI, WCB, SS, Epoxy Coated moulded and replaceable

Seats: Rubber, PTFE, WCB Lined.

Operator: Lever, Gear, Electric & Pneumatic Actuators

Rating: PN 10, PN 16, Class 150, Class 300



BUTTERFLY VALVES - LUGGED / UNDRILLED



As per BS, ISO JIS, DIN

Sizes: DN 40 to DN 1600

Material: DI, CI, WCB, SS, Epoxy coated

Seats: Rubber, PTFE, WCB Lined. Moulded and replaceable bubble tight shut off

Operator: Lever, Gear, Electric & Pneumatic Actuators

Rating: PN 10, PN 16, Class 150, Class 300

BUTTERFLY VALVES - DOUBLE FLANGED

As per BS: 5155, AWWA

Sizes: DN 40 to DN 1600

Materials: CI, DI, WCB, CF8, CF8M, Rubber lined, Resilient seated

Seats: Fully vulcanized with EPDM, NBR, PTFE

Ends: Double Flanged

Operator: Gear, Electric Actuators

Rating: PN 16, PN 25



CHECK VALVES



As per DIN ASME, BS, PN

Type: Wafer, Lugged, Double flanged

Sizes: DN 40 to DN 1200

Materials: NACE compliance, WCB, CF8M, DI, Brass, Bronze

Ends: Flanged, RF, Weld, Threaded

Seats: Metal, NBR, EPDM

Class: 150, 300, PN 10, PN 16

KNIFE GATE VALVES & HYDRANTS

Ductile Iron, Cast Iron, Stainless steel material, non-rising spindle PN10 with accessories hand wheel, actuators - hydraulic / pneumatic, extension spindles. Fire hydrant rigid and break away type.



Y-STRAINERS



As per DIN ASME, BS, PN

Type: Threaded, Flanged

Sizes: DN 15 to DN 300

Materials: WCB, CF8M, Brass, Bronze, Cast Iron

Rating: Class 150, Class 300, PN 10, PN 16

FOOT VALVES

Sizes: DN 15 to DN 1200

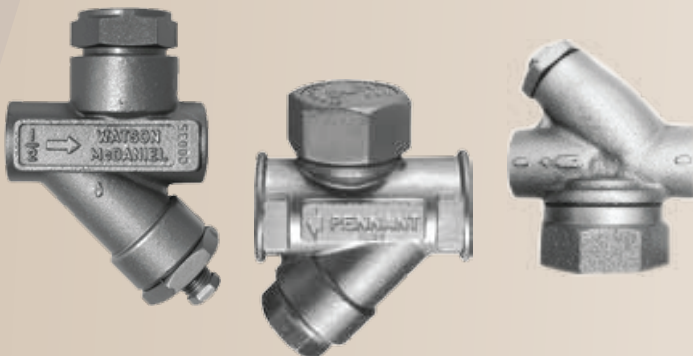
Materials: WCB, CF8M, DI, Brass, Bronze, Cast Iron with

Ends: Flanged, Threaded

Class: 150, 300, PN 10, PN 16



STEAM TRAPS



Used to discharge condensate and non condensable gases with a negligible consumption or loss of live steam.

Material: Cast Iron, Cast Steel, Stainless Steel

Ends: Threaded

Size: 1/2" upto 2"

AIR RELIEF VALVES

Sizes: DN 15 to DN 200

Material: Cast Iron, Brass, Bronze, Stainless steel

Rating: 150 to 600

End connection: Threaded, Flanged



SAFETY VALVES



Designed as per API 526 & API 520
metal seated as per API 527

Sizes: DN 25 to DN 200

Material: Carbon steel, Bronze, Stainless steel

Rating: 150 to 600

End connection: SCRD, SOCKET, FLANGED

PRESSURE REDUCING VALVES

Direct activated for Air, Water, Oil, Gas,
Steam and Chemicals.

Sizes: DN 15 to DN 150

Material: CF8M, Brass, Bronze, Cast Iron

End connection: Threaded, Flanged



SOLENOID VALVES



Sizes: DN 8 to DN 80

Materials: Brass, CF8

Seals: NBR, EPDM, VITON, PTFE

Type: Diaphragm, Piston, Pilot, Direct acting, force pilot

Ends: Flanged, screwed, weld

Rating: Class 150, Class 300, PN 10, PN 16, PN 25

DOUBLE REGULATING / BALANCING VALVES

Sizes: DN 15 to DN 250

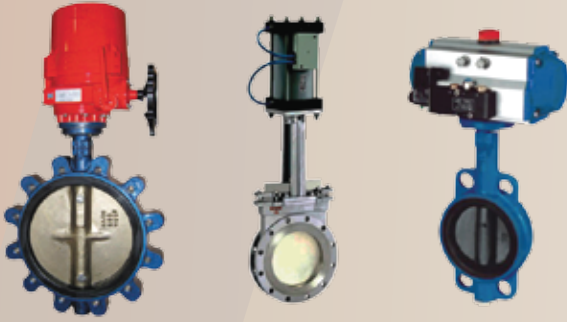
Materials: Brass, CF8, CI, DI, Bronze

Ends: Flanged, screwed, weld

Rating: Class 150, Class 300, PN 10, PN 16, PN 25



PNEUMATIC & ELECTRIC OPERATED VALVES



Type: Pneumatic (Spring loaded, Double Acting)
Electric, 1/4 Turn
For: Ball, Butterfly, Plug valve
Material: WCB, CF8M, DI, PVC, PP
Class: 150, 300, 300, PN 10 PN 16, PN 25

MOTORIZED AND PNEUMATIC VALVES

Sizes: DN 50 to DN 400
Materials: WCB, CF8, CF8M, CI, DI
Type: Diaphragm actuated, Electric motor operated
Ends: Flanged, screwed, weld
Class: 150, 300, PN 10, PN 16, PN 25, PN 40



CONTROL VALVES & ACCESSORIES



Control: On - Off, Modulating
Type: Ball, Butterfly, Globe
Sizes: DN 15 to DN 1400
Material: Carbon steel, Stainless steel, DI & CI
Actuators: Double acting, Spring return, Diaphragm

AIR FILTER REGULATOR

Adjustable regulator with air filter to remove moisture and contaminants. Pressure gauge, guard and transparent filter bowl. Threaded sockets.

Working Pressure: 10kg/cm²
Filter Element: 40 micron
Size: 1/4", 3/8", 1/2", 1"



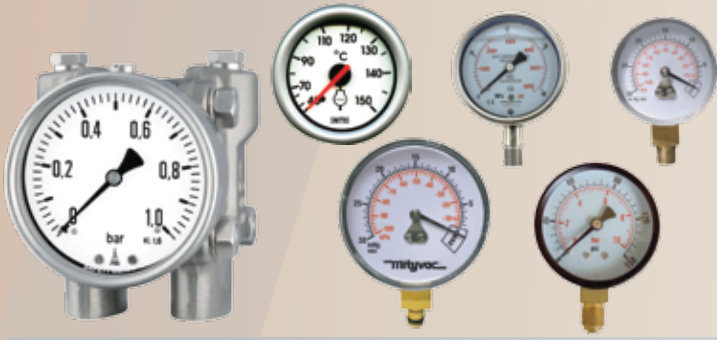
WATER METER



Helix woltmann type,
Dry dial, Wet Dial
Single Jet Type
Electro Magnetic
Multi-Jet type
Batch control type

Sizes: DN 15 to DN 600
Material: Carbon steel, Stainless steel, DI & CI
Rating: Class 150 to Class 600, PN 10, PN 16, PN 25
End connection: Threaded Union ends, Flanged

GAUGES (PRESSURE, TEMPERATURE, VACUUM)



Case and cover material: Aluminium / Stainless Steel
Thread: 1/2 inches PF, 1/8, 1/4 and 3/8 inches, PF/PT, BSP/BSPT and NPT;
Type: Bottom connection;
Oily type: Glycerin or silicone;
Accuracy class: 1.0 and 1.6
 1/4"SAE Vacuum Gauge vacuum gauge/ guage/ adapter and guage TG3/ guage for vacuum pump

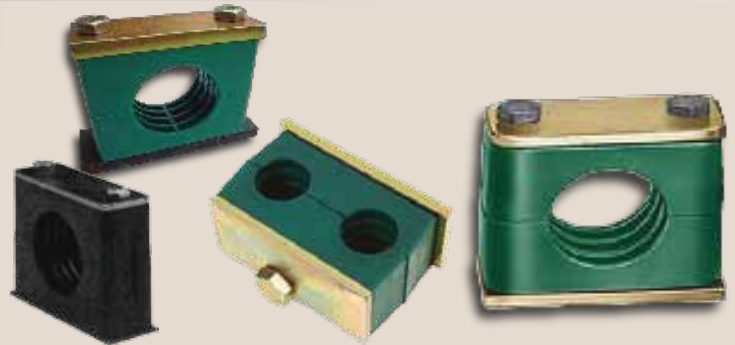
HYDRAULIC CLAMPS

Standard Series

Single clamps comprise of; single weld plate, polyprop jaws, zinc top plate, zinc hex head bolts.

Heavy Series

Heavy series clamps comprise of; single weld plate, polyprop jaws, zinc top plate, zinc hex head bolts.



EXPANSION JOINTS AND RUBBER BELLOWS



Designed as per DIN, PN, ANSI, JIS Standards

Sizes: DN 15 to DN 600

Material: EPDM Single or Double Sphere, Metallic CF8

Rating: Class 150 to Class 600, PN 10, PN 16, PN 25

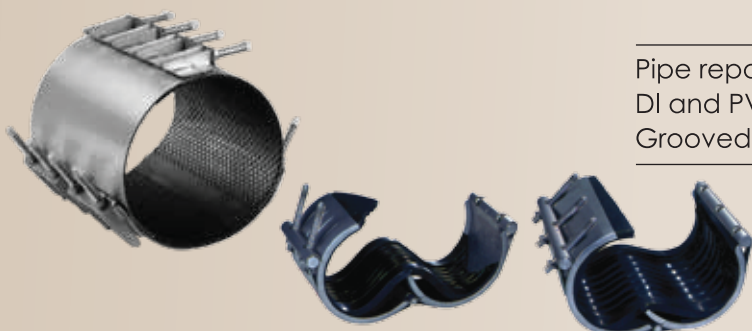
End connection: Threaded Union ends, Flanged

HIGH TOLERANCE PIPE COUPLING AND FLANGE ADAPTORS

Entire Range of universal pipe couplings and flange adaptors from DN40 to DN350. Specially designed to achieve speed and ease of installation, Corrosion & site protection etc. Also available dedicated coupling and adaptors, dismantling joints, Stepped Couplings.



PIPE REPAIR & MECHANICAL COUPLING



Pipe repair coupling clamp in SS 316, SS 304 etc for steel, DI and PVC pipes Diameter DN 50 to DN 600

Grooved fittings, Mechanical couplings and related products.

DEWATERING COUPLING



Type : Miller / Bauer

Sizes : Available from 2" to 12" diameters

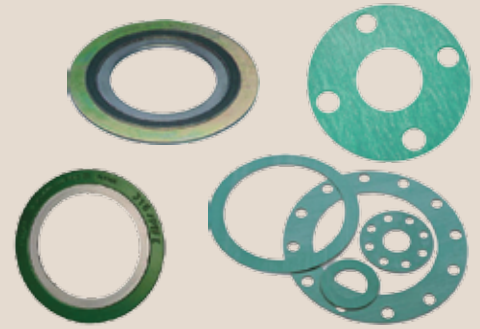
GASKETS

Compressed Fiber, PTFE, Metal clad, Graphite, Spiral wound, Metallic, Cut gasket.

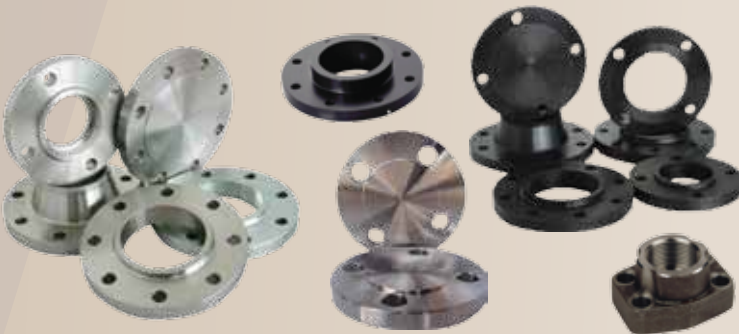
Materials: ASTM F104, API 601, CNAF

Dimension: ANSI B16.5, B16.20 B 16.21, MSS SP 44

Sizes: To suit various services/Class



FLANGES



Standard: ANSI B 16.5, DIN, JIS

Material: Carbon steel, Stainless steel, Alloy steel

Schedule: Standard, 20, 40, 80, 60, 80

Rating: Class 150, Class 300, Class 600, Class 900, PN 6, PN 10, PN 16, PN 25, JIS 5K, JIS 10K

Connection : Threaded , Slip On, Lap joint, Weld Neck

Sizes: 1/2" to 30"

WELDED (ERW / SEAMLESS) PIPES



Sizes: 1/2" up to 40"

Galvanized pipes ASTM A53 GR A 1B

Sizes: 1/2" up to 6"

Stainless steel pipes & tubes

Standard: ASTM A312

Type: 304, 304L, 316, 316L

Schedule: 10, 20, 30, 40, 80, 120, 160, XXH

Sizes: 1/4" up to 60"



BOLT AND NUTS + WASHER



Stud Bolt W/Nuts ASTM A193-B7,

Nuts A194-2H Stainless steel & Carbon steel Bolts machi-

ne & Hex Head Bolts. Anchor and Fasteners: Bolt and

Concrete Anchor. Pipe Clamps, Hanger and Accessories,

Thread Rods. Pipe Wraps Tapes, Pipe Wrap Primers

CAMLOCK FITTINGS



Material : Aluminium, Brass, Stainless Steel
Type: A, B, C, D, E, F, Dust Cap, Dust Plug
Sizes : ½" upto 6"

CLAW COUPLING AND HOSES

Double lock universal quick release couplings.
 Available with male or female threads or with a hose tail.
Ends: Male / Female threaded , Hose ended
 Rubber Air hoses that are flexible, fuel, kink and abrasion resistant for long lasting use are available.



BUTT-WELD FITTINGS



Standard: ASTM/ANSI B 16.9. ASTM/ANSI B 16.28. MS SP-43
Material: Carbon steel, Stainless steel, Alloy steel
Schedule: Standard, 20, 40, 60, 80, 120, 160
Types: Elbow (90 Deg, 45 Deg Long radius/Short radius),
 Tee (Equal, Reducing), End Caps,
 Reducer (Co-centrice, Eccentric)
Sizes: ½" to 30"

FORGED FITTINGS

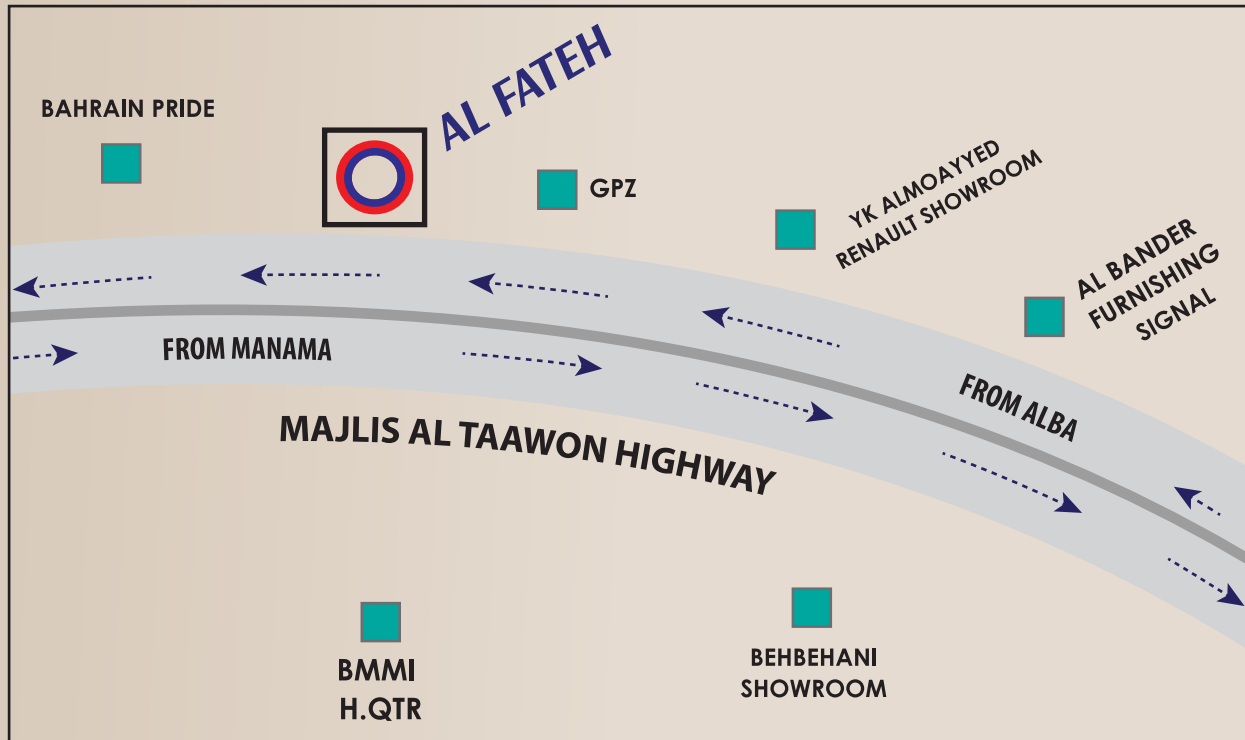
Standard: ASTM/ANSI B16.11.BS 3799
Material: Forged, Stainless Steel, Alloy steel
Schedule: Standard, 20, 40, 60, 80, 120, 160
Types: Elbow (90 DEG, 45DEG, Long/Short radius) Tee,
 Cross, Coupling, Half Coupling, Cap, Street Elbow,
 Square Head Plug, Hex Head Plug,
 Round Head Plug, Hex Head Bushing,
 Flush Bushing,
Connection : Socketweld, Threaded
Sizes: 1/2" to 30"



THREADED FITTINGS



Material: SS, GI, MI, Brass, Copper
Types: Elbow, Tee, UNION, NIPPLE, SOCKET,
 REDUCING BUSH, KING NIPPLE, Barallel Nipple
Schedule: Standard, 20, 40, 60, 80
Connection: BSPT / NPT
Sizes: 1/2" to 30"



LOCATION ADDRESS:- Bldg: 831, Block: 608, Road: 31, Area: Wadyan - Sitra



Scan the QR code
to store our details on your phone

Contact us

P.O. BOX - 54669, Tel: +973 17731085, Fax: +973 17736642

E-mail: info@afisbh.com, Website: www.afisbh.com